

M A X I C O M F O R T <sup>TM</sup> S E R I E S

# Rise

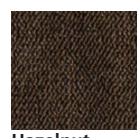
New Small/Medium size!



PR-510MLA Medium/Large

PR-510SME Small/Medium

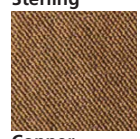
Softouch  
with STAIN DEFENSE



Hazelnut



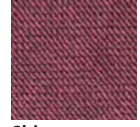
Sterling



Copper



Calypso



Shiraz

MAXI COMFORT <sup>TM</sup>  
Ultimate Recline Technology

## MaxiComfort Cloud

Always the leaders in lift chair innovation, Golden brings hybrid sizing to lift chairs! If your customers have said the original Cloud was too big for them, or too big for their home, we are proud to introduce the new hybrid small/medium Cloud PR510SME! The new small/medium Cloud is recommended for people 5'1" to 5'6". The original Cloud's dimensions have stayed the same but it's now recommended for people 5'7" to 6'4". Fit more clients in two models and take up less space on your showroom floor!



YOUR LIFE IN MOTION

GOLDEN technologies

# MaxiComfort Cloud

M A X I C O M F O R T ™ S E R I E S

Model Number	PR-510SME	PR-510MLA
Size	Small/Med	Med/Large
Weight Capacity	375 LB	375 LB
Recline Positions	MaxiComfort	MaxiComfort
Standard Fabrics	5	5
Fabric Options	ALL	ALL
Chaise Seat	Yes	Yes
Back Type	Biscuit	Biscuit
Head Rest Cover (Detached)	Yes	Yes
Arm Covers	No	No
Battery Back Up	Yes	Yes
Overall Width	33.5"	38"
Overall Height	41"	45"
Width Between Arms	18.5"	20"
Floor to Top of Seat	19"	20"
Seat Depth	19.5"	21.5"
Seat to Top of Back	27"	29"
Seat to Top of Arm	7.5"	7"
Seat Angle Raised	15°	15°
Floor to Top of Foot Rest Reclined	23"	24.5"
Floor to Top of Back Reclined	23"	24"
Back Angle Closed	105°	100°
Back Angle Reclined	170°	170°
Foot Rest Angle Closed	90°	90°
Foot Rest Angle Opened	180°	180°
Distance Required from Wall Reclined	23"	26"
Extension Reclined from Back of Seat to End of Foot Rest	43"	44"
Life Time Warranty, Chair Frame, Lift Frame, Recline Mechanism	Yes	Yes
Warranty on Electrical parts	3 YR	3 YR
Pro Rated Years 4 Thru 7	Yes	Yes
Warranty on Mechanical Labor	3 YR	3 YR
Warranty on Electrical Labor	1 YR	1 YR
Removable Back Option Available	No	No
Smart Tek System Standard	Yes	Yes
Customizable *	No	No
Left Hand Control Option Available	Yes	Yes
Extra Pocket Option Available	Yes	Yes
Heat & Massage Option Available	Yes	Yes
Foot Rest Extension Option Available	No	No
Straight Lift Option Available	No	No
User Height (Suggested)	5'1" - 5'6"	5'7" - 6'4"

\* See Customize Chart for Dimension limits  
 Sizes may vary depending on fabric, filling material, upholstery and carpet thickness. All measurements taken on concrete floor using levels and metal rulers.



Hand-blown, Overstuffed, Conjugated Microfiber Dacron Fill  
**SUPER SUPPORTIVE**

Northern Maple Wood  
 • Double-doweled at Stress Points  
 • Reinforced Miter Blocks  
 • Stapled and Glued  
**STRONGEST IN THE INDUSTRY**

2" of Block Foam  
**EXTRA COMFORT**

Quick Release Hand Control  
**EASY DISCONNECT**

Rear Landing Legs  
**EXTRA STABILITY**

5 Heavy Gauge Springs  
**LONG LASTING FOR INCREDIBLE COMFORT**

Widest Fabric Selection in Industry  
**FITS IN ANY HOME DÉCOR**

10 Gauge Steel Scissor Mechanism  
**STRONG & LONG LASTING**

Adjustable Anti-Skid/Scrape Feet  
**STABILITY & SUPPORT**



501 Medium shown



501 M shown



501 M shown



501 M shown

**Golden Craftsmanship**  
 Each luxury lift & recline chair is hand crafted in our facility using decades of motion furniture experience.

**Added Comfort and Safety**  
 Designed to perform year after year using advanced technology backed by the best warranty.

**Smart Engineering**  
 Smooth, quiet lifting system offers a secure lift for the best performance.



**Smart Tek**  
 In the event of a malfunction, our patented SmartTek™ diagnostic system enables you to get your lift chair up and running quickly.



**Battery Backup System**  
 Batteries not included. Battery Backup System is designed to bring the chair from the reclined to the seated position in the event of a power outage.

Literature is current at time of printing. Golden Technologies reserves the right to make changes to the product or literature at any time.  
 Made in USA

Complies with UL 73 and CSA C22.2 No. 68  
 Listing # E112417  
 FNAE 80-214A

